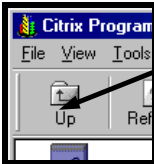


Configure Citrix

This document assumes that you have successfully installed the Citrix client.



1. Double click the Citrix Program Neighborhood icon on your Desktop. The Citrix Program Group Neighborhood will open.



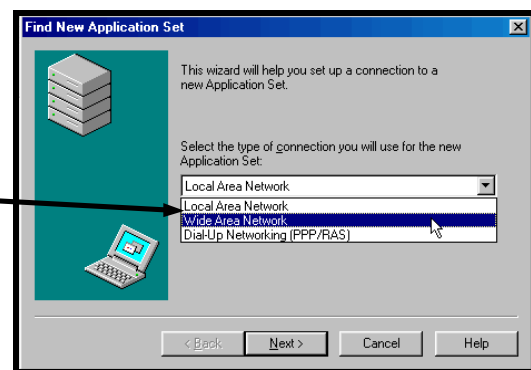
2. Click the **Up** button on the top menu bar.

3. Double click on the **Find New Application Set** icon.

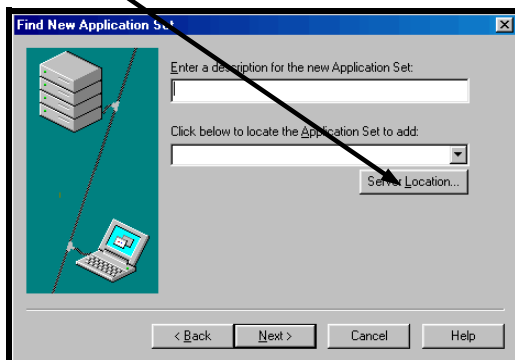


4. Click on the drop-down menu and choose **Wide Area Network** from the list.

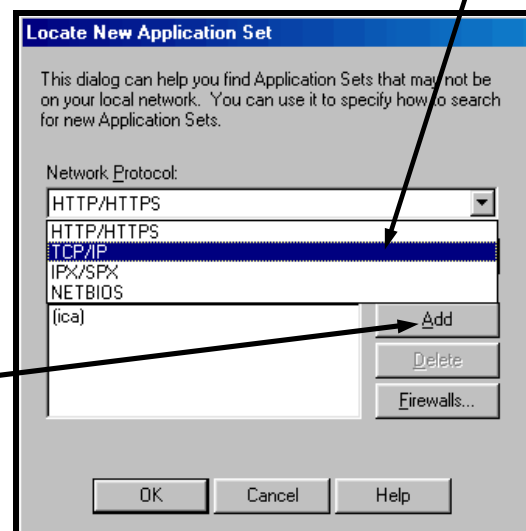
5. Click the Next button.



6. Click the **Server Locations** button.



7. From the Network Protocol drop down menu select **TCP/IP**.

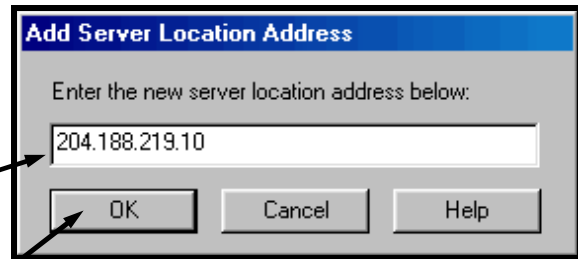


8. Click on the **Add** button and go to the next page.

9. Enter the following series of numbers (IP Address) in the field: **204.188.219.10** Be sure to include the periods. Do not use spaces.

10. Click on the **OK** button.

11. In the **Locate New Application Set** window click the OK button.

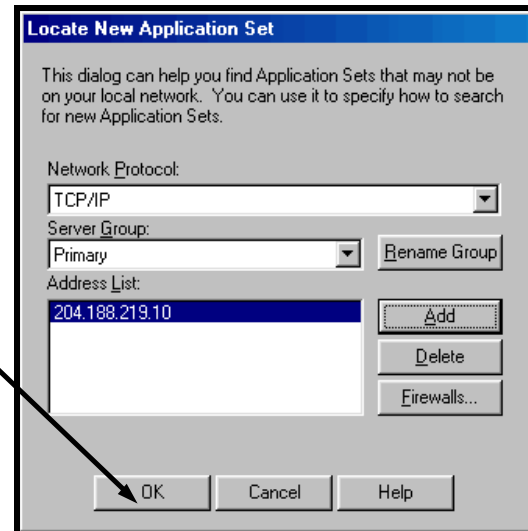


Add Server Location Address

Enter the new server location address below:

204.188.219.10

OK Cancel Help



Locate New Application Set

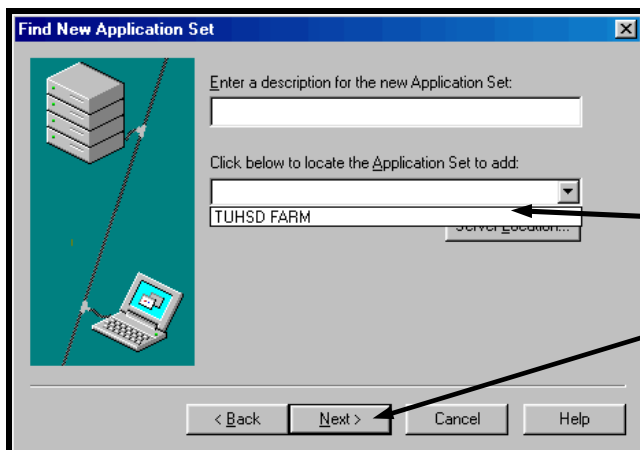
This dialog can help you find Application Sets that may not be on your local network. You can use it to specify how to search for new Application Sets.

Network Protocol: TCP/IP

Server Group: Primary Rename Group

Address List: 204.188.219.10 Add Delete Firewalls...

OK Cancel Help



Find New Application Set

Enter a description for the new Application Set:

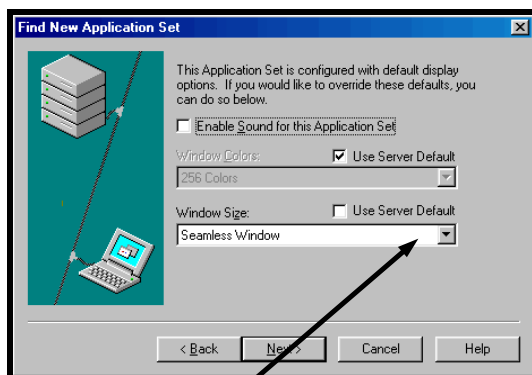
Click below to locate the Application Set to add:

TUHSD FARM Server Location...

< Back Next > Cancel Help

12. Select **TUHSD FARM** from the drop down menu.

13. Click the **Next** button.



Find New Application Set

This Application Set is configured with default display options. If you would like to override these defaults, you can do so below.

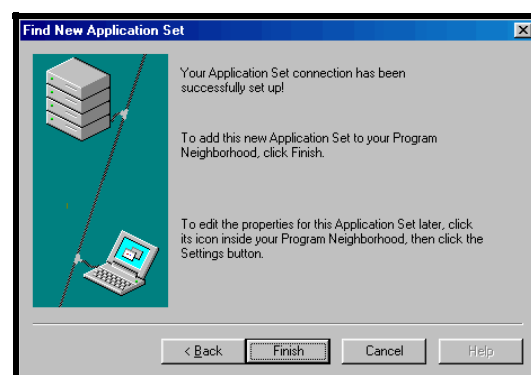
☐ Enable Sound for this Application Set

Window Colors: ☒ Use Server Default 256 Colors

Window Size: ☐ Use Server Default Seamless Window

< Back Next > Cancel Help

14. Select **Full Screen** from the dropdown menu and click the **Next** button.



Find New Application Set

Your Application Set connection has been successfully set up!

To add this new Application Set to your Program Neighborhood, click Finish.

To edit the properties for this Application Set later, click its icon inside your Program Neighborhood, then click the Settings button.

< Back Finish Cancel Help

15. Click the **Finish** button. PowerGrade is ready to use.